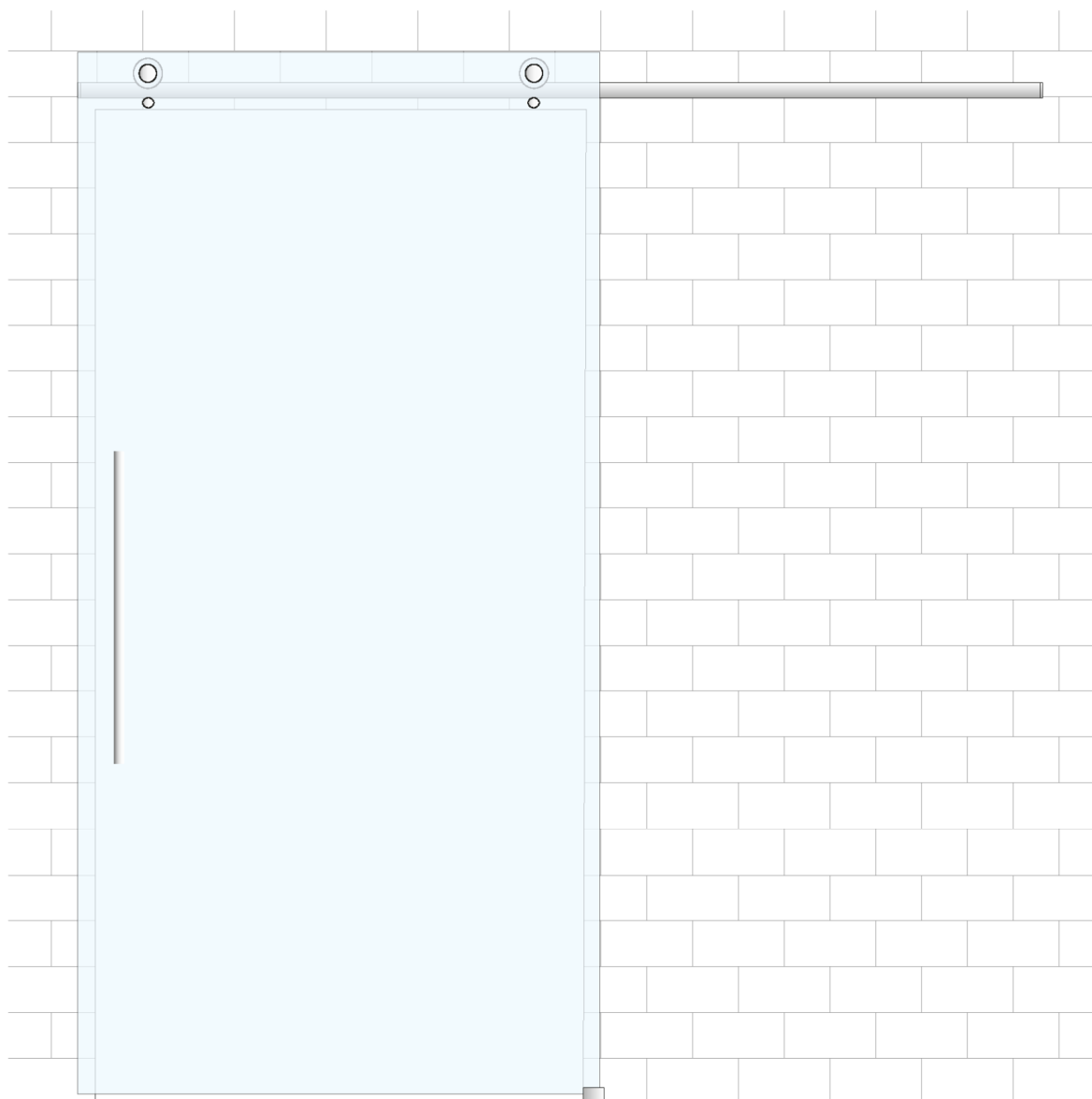
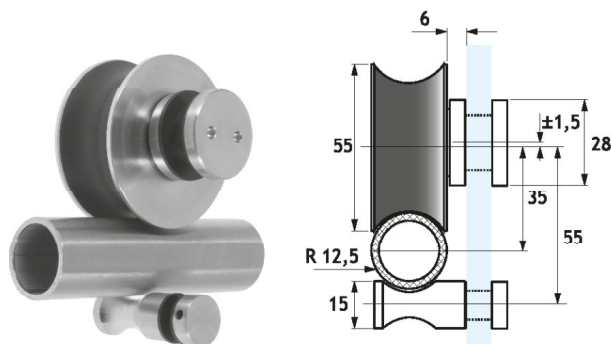


R100 SYSTEM

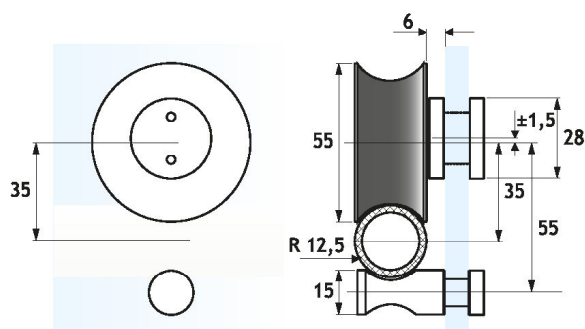


Sistema tecnico a vista per porte scorrevoli
Fissaggio a parete, a vetro o a soffitto
Movimento silenzioso su cuscinetti a sfera
Regolazione in altezza dei carrelli
Realizzato completamente in acciaio Inox Aisi 304
Lunghezza delle barre cm 200-300-400-600
Disponibile in kit scorrimento con componenti e accessori separati

At sight technical sliding glass doors system
Wall, glass and ceiling fixing
Silent ball bearing rollers
Height adjustment
Full Aisi 304 stainless steel manufacturing
Bar length: 200-300-400-600 cm
Sliding sets and separate components available

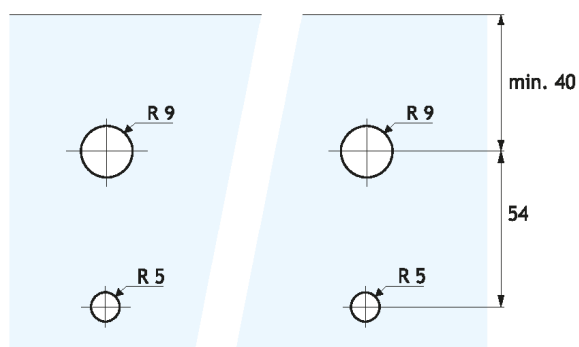


R100K

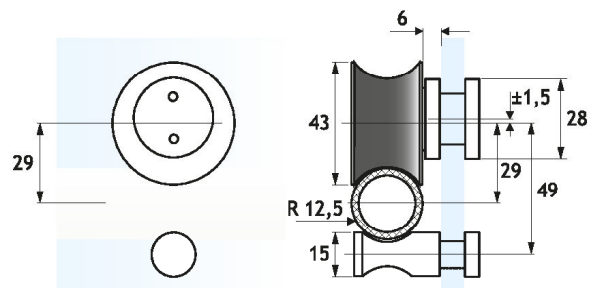


Kit scorrimento per anta singola composto da 2 carrelli R100
diametro 55 mm e 2 perni anti-scarrucolamento R101
Movimento silenzioso su cuscinetti a sfera
Regolazione eccentrica dei carrelli
Realizzato in acciaio inox Aisi 304

Sliding set for single door consisting of two 55 mm diameter R100
rollers and two R101 anti-lift pins
Silent ball bearing rollers
Height adjustment with eccentric cam
Aisi 304 stainless steel manufacturing

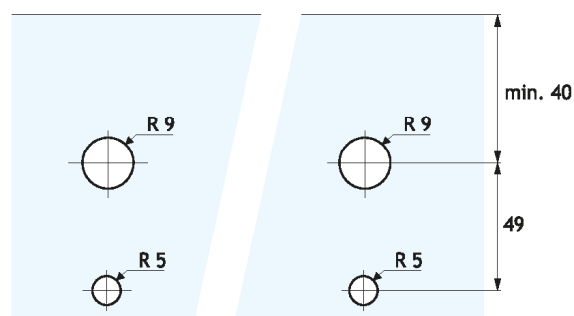


R100SK



Kit scorrimento per anta singola composto da 2 carrelli R100
diametro 43 mm e 2 perni anti-scarrucolamento
Movimento silenzioso su cuscinetti a sfera
Regolazione eccentrica dei carrelli
Realizzato in acciaio inox Aisi 304

Sliding set for single door consisting of two 43 mm diameter R100
rollers and two R101 anti-lift pins
Silent ball bearing rollers
Height adjustment with eccentric cam
Aisi 304 stainless steel manufacturing

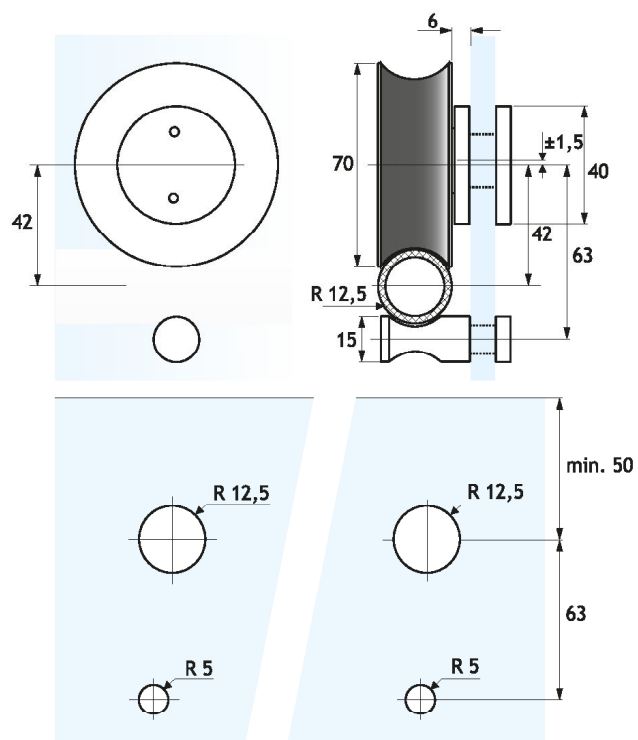


R100LK



Kit scorrimento per anta singola composto da 2 carrelli R100
diametro 70 mm e 2 perni anti-scarrucolamento
Movimento silenzioso su cuscinetti a sfera
Regolazione eccentrica dei carrelli
Realizzato in acciaio inox Aisi 304

Sliding set for single door consisting of two 70 mm diameter R100
rollers and two R101 anti-lift pins
Silent ball bearing rollers
Height adjustment with eccentric cam
Aisi 304 stainless steel manufacturing

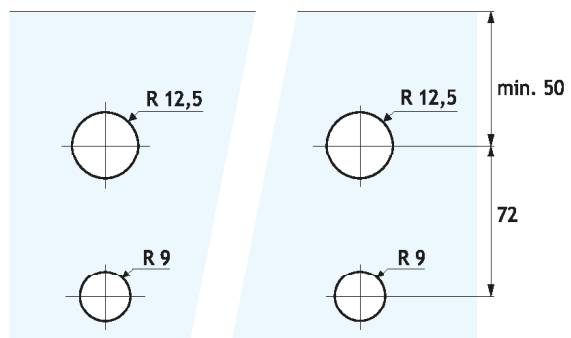
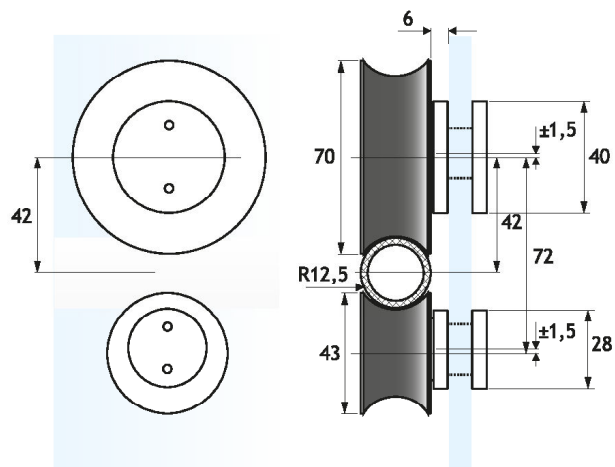


R100HDK



Kit scorrimento per anta singola composto da 2 carrelli R100 diametro 70 mm e 2 carrelli R100 diam 43 mm
Particolarmente adatto a sistemi con fissaggio a soffitto
Movimento silenzioso su cuscinetti a sfera
Regolazione eccentrica dei carrelli
Realizzato in acciaio inox Aisi 304

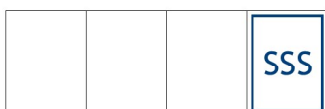
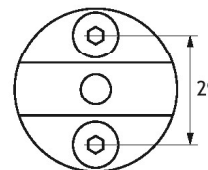
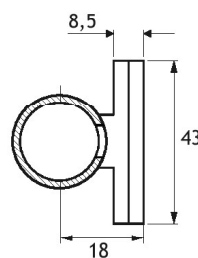
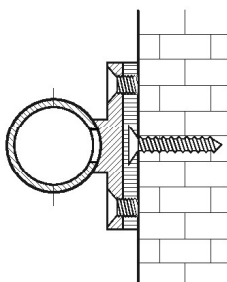
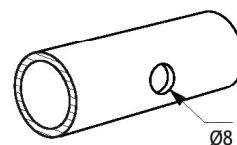
Sliding set for single door consisting of two 70 mm diameter R100 rollers and two 43 mm diam R100 rollers
Especially suitable for systems with ceiling fixing
Silent ball bearing rollers
Height adjustment with eccentric cam
Aisi 304 stainless steel manufacturing



R22

Elemento di fissaggio a muro per rotaia tubolare R8M da utilizzarsi con sistemi scorrevoli R100 e R110
Forniti già assemblati alla rotaia tagliata a misura
Si utilizza un fissaggio ogni 500/600 mm a seconda del peso della porta (comunicare all'ordine le dimensioni della porta)
Realizzato in fusione di acciaio inox Aisi 304

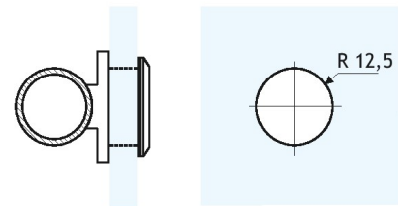
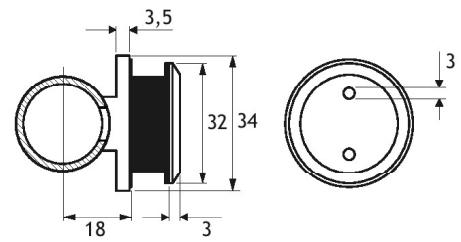
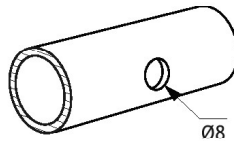
Wall fixing fastening element for R8M tubular track to use with R100 and R110 systems
Supplied pre-assembled with cut to size track
Use one element every 500/600 mm depending on door weight (specify door size in the order)
Diecast Aisi 304 stainless steel manufacturing



R23

Elemento di fissaggio a vetro per rotaia tubolare R8M da utilizzarsi con sistemi scorrevoli R100 e R110
Forniti già assemblati alla rotaia tagliata a misura
Si utilizza un fissaggio ogni 500/600 mm a seconda del peso della porta (comunicare all'ordine le dimensioni della porta)
Realizzato in fusione di acciaio inox Aisi 304

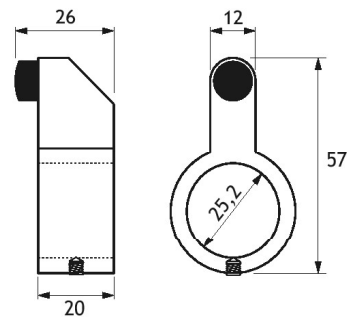
Glass fixing fastening element for R8M tubular track
For use with R100 and R110 systems
Supplied pre-assembled with cut to size track
Use one element every 500/600 mm depending on door weight (specify door size in the order)
Diecast Aisi 304 stainless steel manufacturing



R24

Stopper reversibile destra/sinistra per sistemi R100
Realizzato in fusione di acciaio inox Aisi 304

Left/right reversible stop for R100 systems
Diecast Aisi 304 stainless steel manufacturing

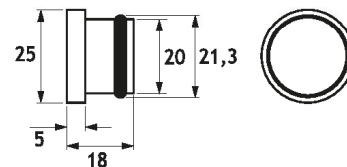


			SSS
--	--	--	-----

R06

Terminale a pressione per rotaia tubolare R08M
Realizzato in fusione di acciaio inox Aisi 304

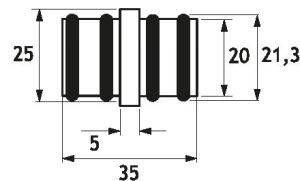
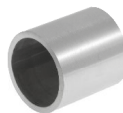
Pressure end plug for R08M tubular track
Diecast Aisi 304 stainless steel manufacturing



R06J

Innesto di congiunzione a pressione per rotaia tubolare R08M
Realizzato in fusione di acciaio inox Aisi 304

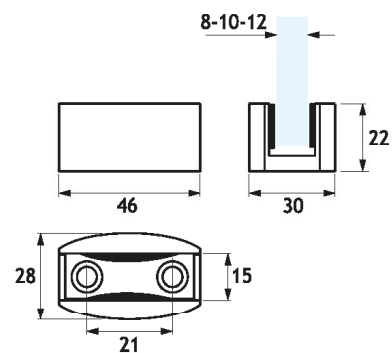
Pressure joint inset for R08M tubular track
Diecast Aisi 304 stainless steel manufacturing



R07

Guida a pavimento smontabile e regolabile
Realizzata in fusione di acciaio inox Aisi 304

Dismountable and adjustable floor guide
Diecast Aisi 304 stainless steel manufacturing



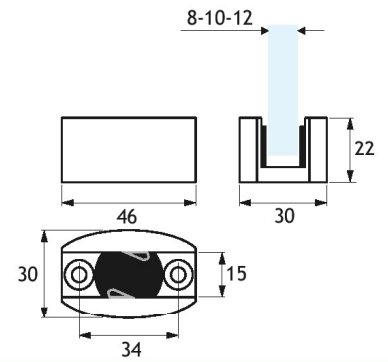
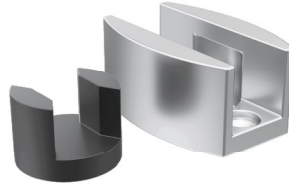
R07A

Guida a pavimento regolabile

Realizzata in fusione di acciaio inox Aisi 304

Adjustable floor guide

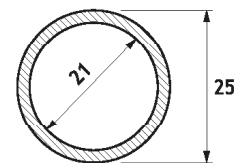
Diecast Aisi 304 stainless steel manufacturing



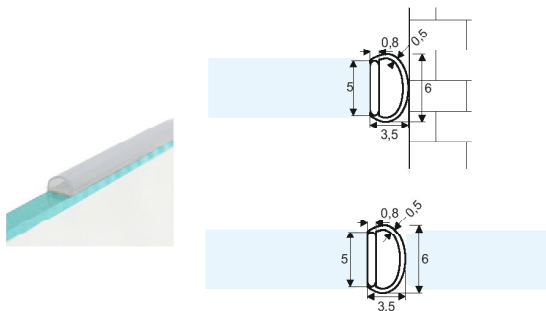
R08M

Rotaia tubolare per sistemi R1 - R100 e R110
Realizzata in acciaio inox Aisi 304
Lunghezza delle barre cm 200-300-400-600

Tubular track for R1 - R100 and R110 systems
Aisi 304 stainless steel manufacturing
Bar lenght is 200-300-400-600 cm



AS03R

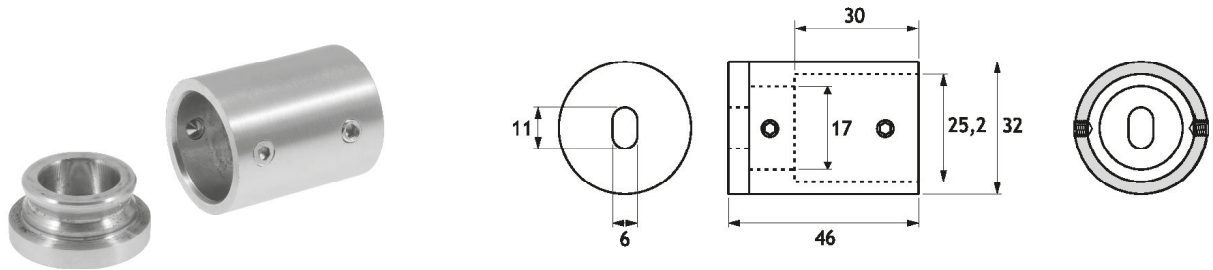


Guarnizione a palloncino adesiva
Utilizzabile per porte scorrevoli a singola e doppia anta
Speciale elastomero termoplastico ad alta resistenza anti-UV e
anti-invecchiamento
Venduta al metro lineare

Adhesive ball seal
For single and double sliding doors
Special high resistance anti-aging anti-UV thermoplastic
elastomer
Sold by the meter



R29



Terminale di fissaggio a muro per rotaia R08M
Realizzata in fusione di acciaio inox Aisi 304

Track end wall fixing for R08M
Diecast Aisi 304 stainless steel manufacturing



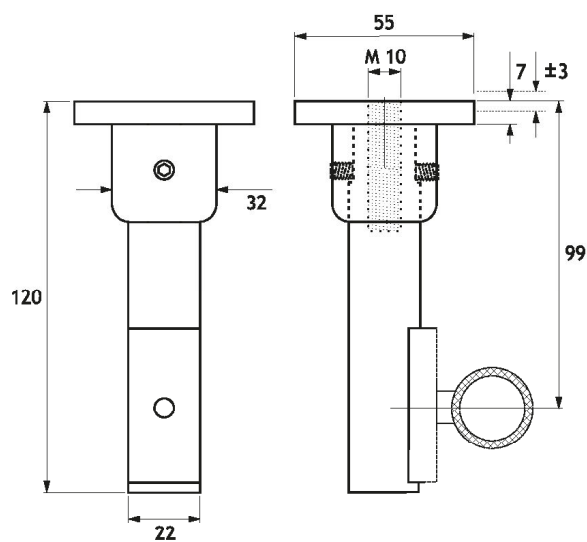
			SSS
--	--	--	-----

R30

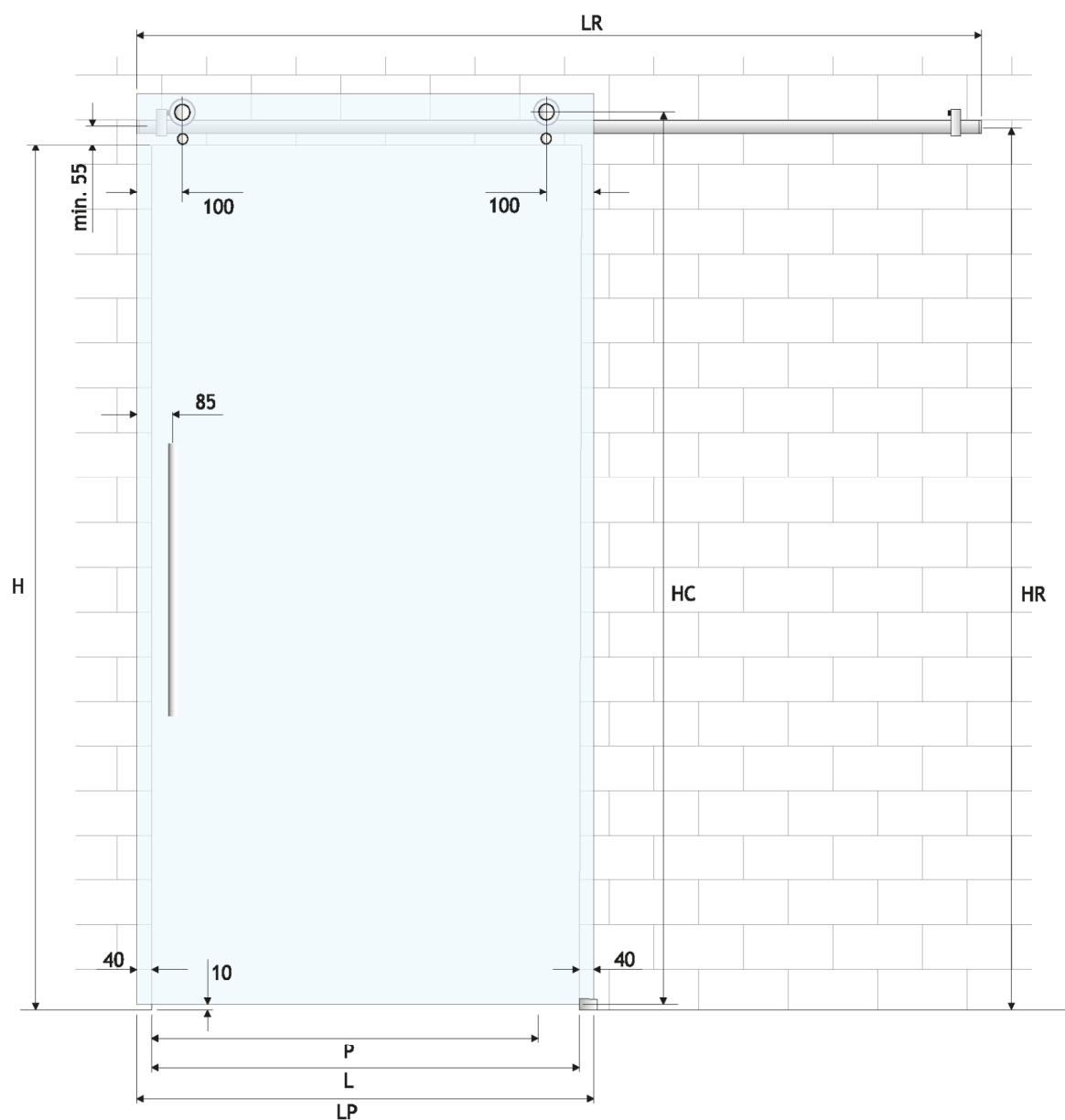


Supporto regolabile per fissaggio rotaia R08M a soffitto per sistemi R1, R100, R110
Si utilizza con R02 o R22 (non compresi) a seconda del sistema utilizzato
Realizzato in acciaio inox Aisi 304

Ceiling adjustable fixing arm for R08M track in R1, R100 and R110 systems
For use with R02 or R22 supports (not included)
Aisi 304 stainless steel manufacturing

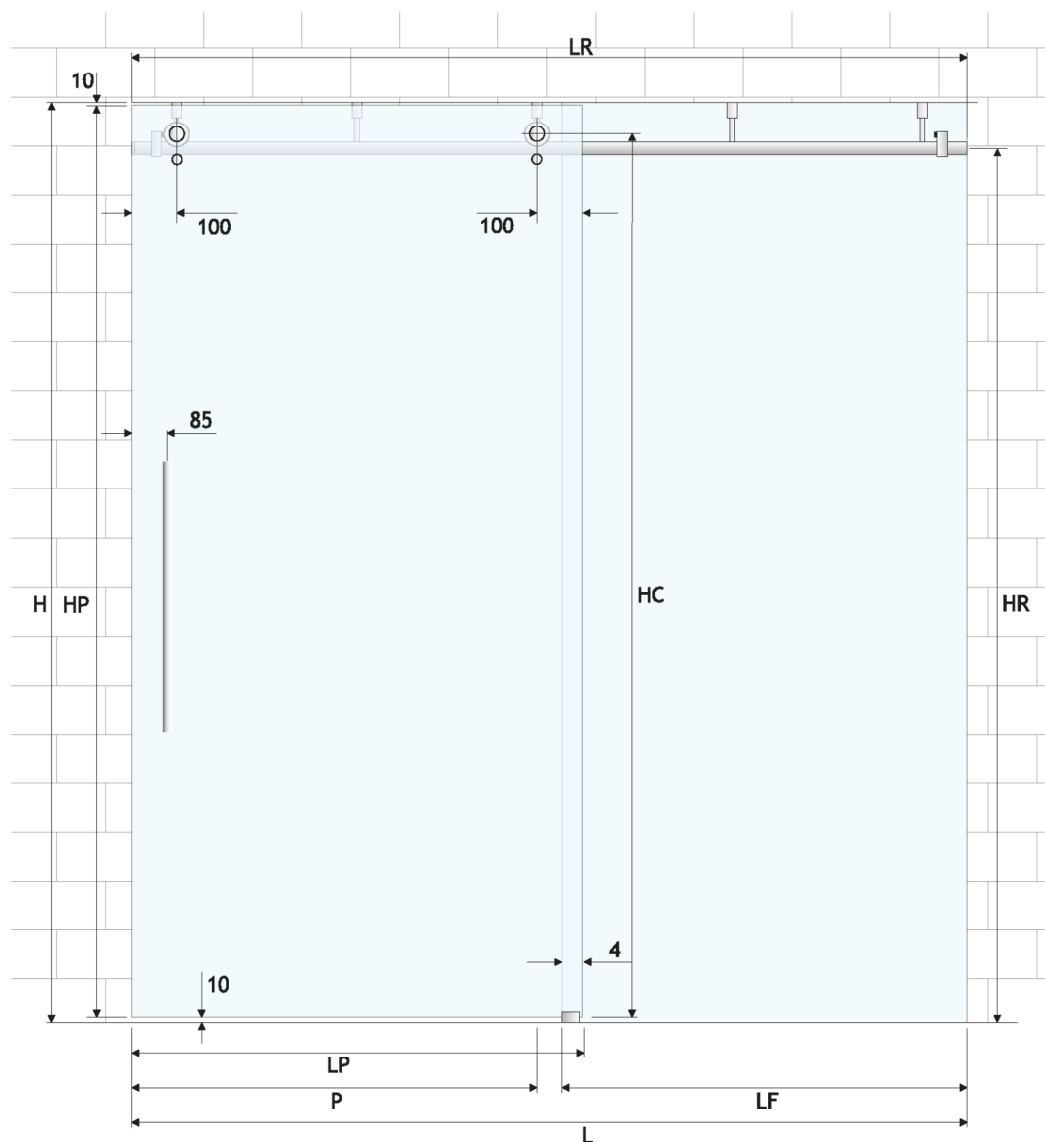


R100 SYSTEM



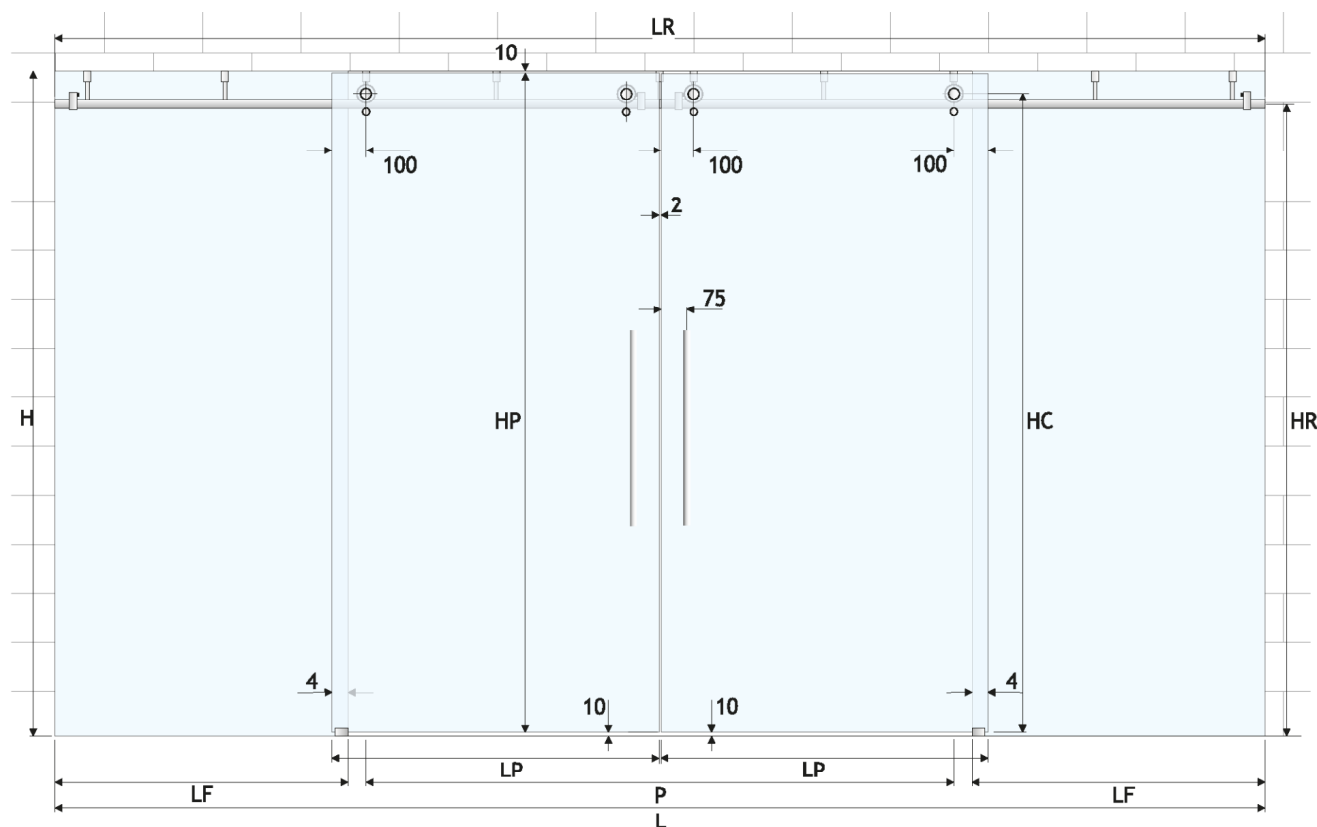
Dimensionamento della porta e del binario kit R100K, R100SK, R100LK, R100HDK, fissaggio a muro o vetro, anta singola	Door and track sizing for sets R100K, R100SK, R100LK, R100HDK, wall or glass fixing single door
Lunghezza rotaia (LR) = (L * 2) - 10 mm	Track length (LR) = (L * 2) - 10 mm
Altezza della rotaia (HR) = H + 55 mm min.	Track height (HR) = H + 55 mm min.
Larghezza porta (LP) = L + 80 mm	Door width (LP) = L + 80 mm
Altezza della porta ai carrelli (HC) = (HR - 10 mm) + 29/35/42 a seconda del kit utilizzato	Door height to the rollers (HC) = (HR - 10 mm) + 29/35/42 mm depending on the set used
Misura del passaggio (P) = L - 130 mm	Passage width (P) = L - 130 mm

R100 SYSTEM



Dimensionamento della porta e del binario kit R100LK, R100HDK, fissaggio a soffitto, anta singola	Door and track sizing for sets R100LK, R100HDK, ceiling fix single door
Lunghezza rotaia (LR) = L	Track lenght (LR) = L
Altezza della rotaia (HR) = H - 96/101 mm	Track height (HR) = H - 96/101 mm
Larghezza porta (LP) = L / 2 + 80 mm	Door width (LP) = L / 2 + 80 mm
Altezza della porta ai carrelli (HC) = (HR - 10 mm) + 42 mm	Door height to the rollers (HC) = (HR - 10 mm) + 42 mm
Misura del passaggio (P) = L / 2 - 80 mm	Passage width (P) = L / 2 - 80 mm
Larghezza del vetro laterale (LF) = L / 2 - 40 mm	Side panel width (LF) = L / 2 - 40 mm

R100 SYSTEM



Dimensionamento della porta e del binario kit R100LK, R100HDK, fissaggio a soffitto, anta doppia	Door and track sizing for sets R100LK, R100HDK, ceiling fixing double doors
Lunghezza rotaia (LR) = L	Track length (LR) = L
Altezza della rotaia (HR) = H - 96/101 mm	Track height (HR) = H - 96/101 mm
Larghezza porta (LP) = L / 4 + 80 mm	Door width (LP) = L / 4 + 80 mm
Altezza della porta ai carrelli (HC) = (HR - 10 mm) + 42 mm	Door height to the rollers (HC) = (HR - 10 mm) + 42 mm
Misura del passaggio (P) = L / 2 - 160 mm	Passage width (P) = L / 2 - 160 mm
Larghezza del vetro laterale (LF) = L / 4 - 40 mm	Side panel width (LF) = L / 4 - 40 mm